

WORSHIP PARTICIPANTS

Pastors: Rev. Bob W. David and Rev. Kyle Otterbein

Dixieland Ensemble: Jeff Charis-Carlson, Jason Gehrs, Lisa Goodfellow-Mertens, Wes Habley, Steve Junge, Lee Rabe, Lee Witwer

Ushers: (8:30) Mark + Lisa Moser family (11:00) Joe + Jennifer Reinhardt family

Greeters: (8:30) Rosemary Plapp (11:00) Marlin + Judy Swartzendruber

ANNOUNCEMENTS

- Children are welcome and encouraged to participate in our worship services.
- Children's bulletins and worship bags are available in the Narthex as you enter the Sanctuary.
- Nursery care is provided for 2-year-olds and younger during both worship services.
- Children's Time is for ages 3 years through Kindergarten and meets in the Castle Room in the East Wing. This is a time of unstructured play, special activities, and continuing worship.
- Seating, sound, and worship hymnals are available in the Narthex.
- Large print hymnals and Bibles are available from the ushers.
- Flowers are given in recognition of Jerry + Judy Walker's wedding anniversary.
- Interested in the ministry opportunities of St. Andrew?

Our weekly Mini-Messenger and monthly Messenger newsletters are available online at: www.saintandrew-ic.org (under the "News" heading) or in paper version in the rack near the Welcome Table and on the table outside the main office.



20TH SUNDAY IN ORDINARY TIME

AUGUST 15, 2010 ☩ 8:30 + 11:00 AM

Hymns and songs may be found in The Presbyterian Hymnal (blue) or Sing! A New Creation (green).

GATHERING

WELCOME + ANNOUNCEMENTS

PRELUDE

Just a Closer Walk with Thee *setting by Paul Severson*

Our music is offered to the glory of God; if you wish to express a response, a spoken "Amen" or "Praise God" is welcomed.

*CALL TO WORSHIP

*OPENING HYMN

Shall We Gather at the River *see insert*

*CALL TO CONFESSION

We know that nothing is able to separate us from the love of God in Jesus Christ.
Let us in freedom confess the wrong we have done.

*PRAYER OF CONFESSION

Lord God, we have given more weight to our successes and our happiness than to your will. We have eaten without a thought for the hungry. We have spoken without an effort to understand others. We have kept silence instead of telling the truth. We have acted in accordance with our opinions rather than according to your commands. Within your church we have been slow to practice love of our neighbors. And in the world we have not been your faithful servants. Forgive us and help us to live as disciples of Jesus Christ, your Son, our Savior. Amen.

Silence for personal confession

*WORDS OF ASSURANCE

Through Jesus Christ forgiveness of sins is proclaimed to you.
In Christ we have redemption through his blood, the forgiveness of our trespasses, according to the riches of his grace.

SAINT ANDREW PRESBYTERIAN CHURCH

1300 Melrose Avenue • Iowa City, IA 52246 • 319/338-7523 • www.saintandrew-ic.org

Bold print - speak or sing together in unison

**please stand as you are able*

*THE PEACE/TIME OF GREETING

The grace, love, and peace of our Lord Jesus Christ be with you all.
And also with you.

 WORD OF GOD

OLD TESTAMENT READING

Psalm 82 OT Bible, pg. 542
The Word of the Lord. **Thanks be to God.**

CHILDREN'S MESSAGE

CONGREGATIONAL HYMN

I Love to Tell the Story *see insert*
Parents who would like to have their children participate in Children's Time in the Castle Room are welcome to accompany their children to the East Wing during the singing of the Congregational Hymn.

NEW TESTAMENT READING

Hebrews 11:29 - 12:2 NT Bible, pg. 226
The Word of the Lord. **Thanks be to God.**

GOSPEL READING

Luke 12:49-56 NT Bible, pg. 75
The Word of the Lord. **Thanks be to God.**

MESSAGE

Running to the End of Our Faith *Rev. Kyle Otterbein*

 OFFERING OURSELVES FOR GOD'S PURPOSE

WORSHIP IN TITHES AND OFFERINGS

If you have a prayer request, please fill out a prayer card from the pew rack and place it in the offering plate.

OFFERTORY

The Old Rugged Cross *setting by David Larrick*

PRAYER OF DEDICATION

PRAYERS OF THE PEOPLE

What a Friend We Have in Jesus *blue, #403*

THE LORD'S PRAYER

blue, pg. 16 - traditional

 SENDING

*CLOSING HYMN

Leaning on the Everlasting Arms



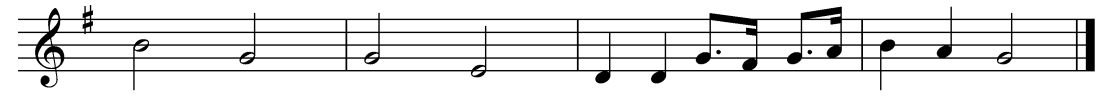
1. What a fel - low - ship, what a joy di - vine, lean - ing on the ev - er - last - ing arms;
2. Oh, how sweet to walk in this pil - grim way, lean - ing on the ev - er - last - ing arms;
3. What have I to dread, what have I to fear, lean - ing on the ev - er - last - ing arms;



what a bless - ed - ness, what a peace is mine, lean - ing on the ev - er - last - ing arms.
oh, how bright the path grows from day to day, lean - ing on the ev - er - last - ing arms.
I have bless - ed peace with my Lord so near, lean - ing on the ev - er - last - ing arms.



Refrain Lean - ing, lean - ing, safe and se - cure from all a - larms;



lean - ing, lean - ing, lean - ing on the ev - er - last - ing arms.

SHOWALTER
Text: Elisha Hoffman (1839-1929)
Music: Anthony J. Showalter (1858-1924)

*CHARGE + BLESSING

POSTLUDE

When the Saints Go Marching In *setting by Paul Severson*
You are invited to be seated for the postlude. Soli Deo Gloria! Glory to God Alone!