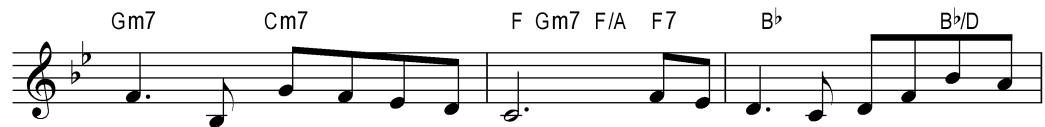


❖ BENEDICTION



1. May the peace of God our heav - 'nly Fa - ther, and the
2. May the peace which pass - es un - der - stand - ing, and this



grace of Christ the Ri - sen Son, and the fel - low-ship of God the
grace which makes us what we are, and this fel - low-ship of his com -



Spir - it keep our hearts and minds with - in his love.
mun - ion make us one in spir - it and in heart.



Refrain: And to him be praise for his glo - rious reign, from the



depths of earth to the heights of heav'n; we de - clare the name of the



Lamb once slain - Christ e - ter - nal, the King of kings.

Text + Music: Keith Getty and Stuart Townend
© 2005 Kingsway's Thankyou Music; admin. EMI Christian Music Publishing.
All rights reserved. Used by permission. CCLI #617801.



TRANSFIGURATION OF THE LORD

MARCH 6, 2011 ❖ 8:30 + 11:00 AM

Hymns and songs may be found in The Presbyterian Hymnal (blue) or Sing! A New Creation

❖ GATHERING

WELCOME + ANNOUNCEMENTS

PRELUDE

8:30: Osse Shalom *setting by Susan T. Nelson*

Laudate!

11:00: Beautiful Savior *setting by Cathy Moglebust*

Resound!

*CALL TO WORSHIP

The Lord is king; let the peoples tremble!

The Lord is great upon the mountain; he reigns over all the peoples.

Let us praise God's great and awesome name. Holy is he!

Mighty King, lover of justice, you uphold mercy and righteousness.

Extol the Lord our God; worship at his footstool. Holy is he!

Moses was among his priests, Elijah also was among those who called on his name.

They cried to the Lord, and he answered them.

He spoke to them from the cloud; they kept his word and the commands that he gave them.

Extol the Lord our God, and worship at his holy mountain; for the Lord our God is holy.

*OPENING SONG

Shine, Jesus, Shine *green, #128* introduction by Peggy Bettcher

Jubilate!/Resound!

*CALL TO CONFESSION

We find the way of Jesus difficult, so instead we choose to travel the broad paths of the world.

We build lives upon shifting sand rather than on the rock of Christ.

That we may return to the path of life, let us confess our sin.

*PRAYER OF CONFESSION

God of compassion, in Jesus Christ we behold your transforming light, yet we continue to live in darkness. Preoccupied with ourselves, we fail to see your work in the world. We speak when we should listen; we act when we should reflect. Empower us to live in your light and to walk in your ways for the sake of him who is the light of the world, Jesus Christ, our Lord and Savior. Amen.

*WORDS OF ASSURANCE

Now the Lord is the Spirit, and where the Spirit of the Lord is, there is freedom. And all of us, with unveiled faces, seeing the glory of the Lord as though reflected in a mirror, are being transformed into the same image from one degree of glory to another, for this comes from the Lord, the Spirit.

In Jesus Christ we are forgiven and transformed! Praise be to God!

***Bold print** - speak or sing together in unison*

****please stand as you are able***

ST. ANDREW PRESBYTERIAN CHURCH

1300 Melrose Avenue • Iowa City, IA 52246 • 319/338.7523 • www.saintandrew-ic.org

*THE PEACE/TIME OF GREETING

The grace, love, and peace of our Lord Jesus Christ be with you all.

And also with you.

Parents who would like to have their children participate in Children's Time in the Castle Room are welcome to accompany their children to the East Wing during the passing of the peace.

✦ GOD'S WORD

OLD TESTAMENT READING

Exodus 24:12-18

OT Bible, pg. 70

The Word of the Lord. **Thanks be to God.**

GOSPEL READING

Matthew 17:1-9

NT Bible, pg. 18

The Word of the Lord. **Thanks be to God.**

CHORAL RESPONSE (11:00)

This Is My Beloved Son *by Knut Nystedt*

Logos Choir

GOSPEL READING

Matthew 7:21-29

NT Bible, pg. 7

The Word of the Lord. **Thanks be to God.**

MESSAGE

Granite-Strong Discipleship *Rev. Kyle Otterbein*

✦ OUR RESPONSE

WORSHIP IN TITHES AND OFFERINGS

If you have a prayer request, please fill out a prayer card from the pew rack and place it in the offering plate.

OFFERTORY

8:30: Pray for the People *by Pepper Choplin*

Agape Singers; Justin Moser, soloist

11:00: True Light *by Keith Hampton*

Logos Choir

PRAYER OF DEDICATION

✦ EUCHARIST

GREAT PRAYER OF THANKSGIVING AND PRAYER CONCERNS

The Lord be with you.

And also with you.

Lift up your hearts!

We lift them to the Lord.

Let us give thanks to the Lord our God.

It is right to give our thanks and praise.

THE LORD'S PRAYER

blue, pg. 16 - traditional

THE WORDS OF INSTITUTION/DISTRIBUTION OF THE ELEMENTS

CONGREGATIONAL HYMN: You, Lord, Are Both Lamb and Shepherd *green, #182*

PRAYER AFTER COMMUNION

O God, before the death of your one and only Son, you revealed his glory upon the holy mountain. From his glory we have now received at this table. Grant to us that we, have received his body and blood, may be strengthened to bear our cross and be changed into his likeness from glory to glory, through Jesus Christ, our Lord, who lives and reigns with you and the Holy Spirit, one God, for ever and ever. Amen.

✦ SENDING

*SENDING SONG

Benediction *see the back of this bulletin*

*CHARGE + BLESSING

The Lord bless you and keep you; the Lord make his face shine upon you and be gracious to you; the Lord turn his face toward you and give you peace.

Alleluia! Amen.

POSTLUDE

You, Lord, Are Both Lamb and Shepherd *setting by Kenneth Kosche*

You are invited to be seated for the postlude. Soli Deo Gloria! Glory to God Alone!

✦ WORSHIP PARTICIPANTS

Pastor: Rev. Kyle Otterbein

Lay Leader: Stephanie Engelhardt

Directors of Music: Laura Kastens, Erin Moore, Matthew Penning

Musicians: Logos Choir, Resound!, Agape Singers (Justin Moser, soloist), Jubilate!, Laudate!

Ushers + Greeters: Elders

✦ ANNOUNCEMENTS

- Children's bulletins and worship bags are available in the Narthex as you enter the Sanctuary.
- Nursery care is provided for 2-year-olds and younger during both worship services.
- Children's Time is for ages 3 years through kindergarten and meets in the Castle Room in the East Wing. This is a time of unstructured play, special activities, and continuing worship.
- Seating, sound, and worship hymnals are available in the Narthex.
- Flowers are given by John + Patti Benson and family in celebration of Allison's 15th birthday.
- Christian Education for All Ages - today at 9:45 am
 - Children ages 2 - kindergarten meet in the East Wing
 - Children + Youth in grades 1-12 meet in classrooms in the North Wing
 - Adults meet in the North Wing for *The Disciple Making Church*
- Interested in the ministry opportunities of St. Andrew?

Our weekly *Mini-Messenger* and monthly *Messenger* newsletters are available online at: www.saintandrew-ic.org (under the "News" heading) or in paper version in the Narthex.